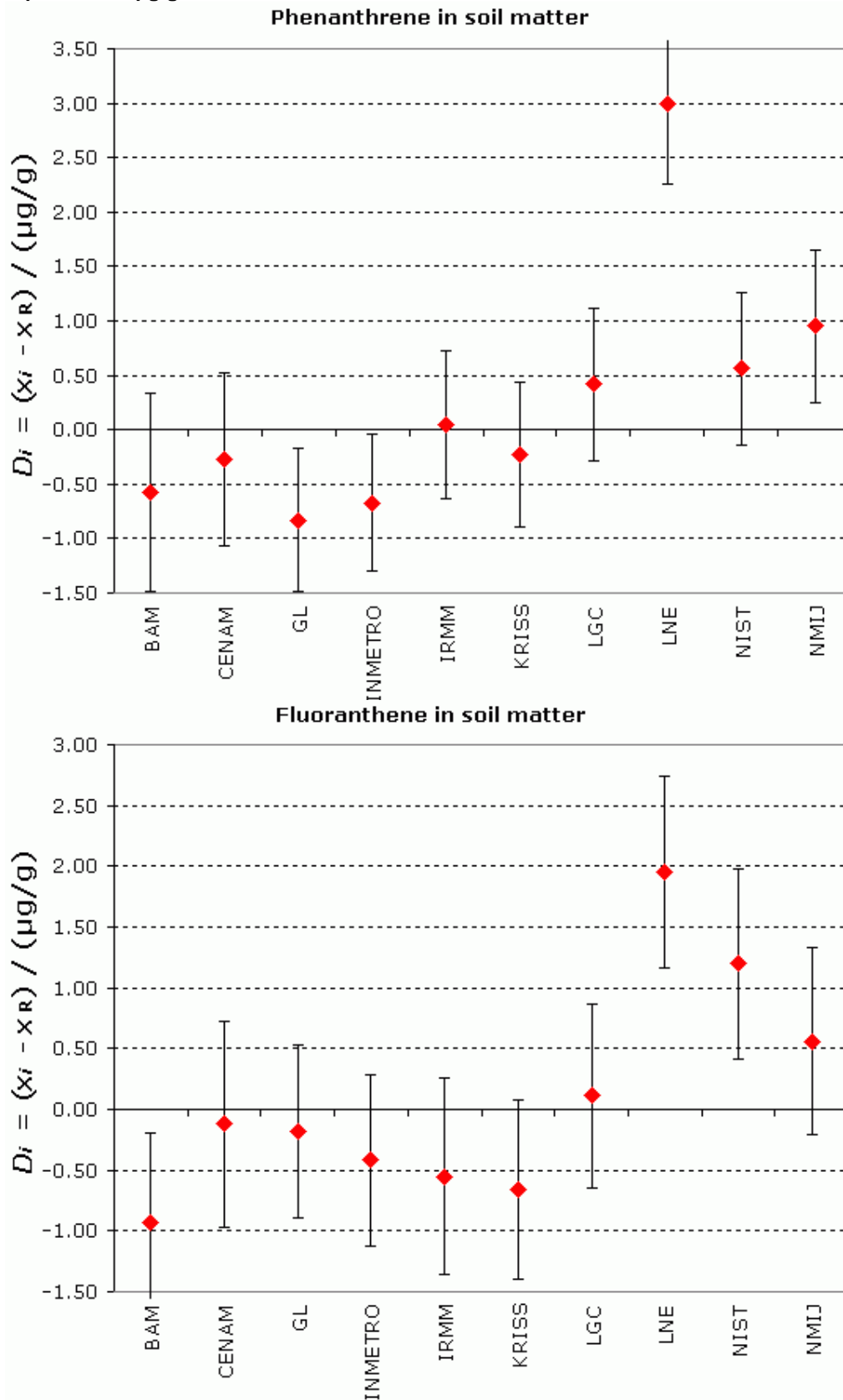
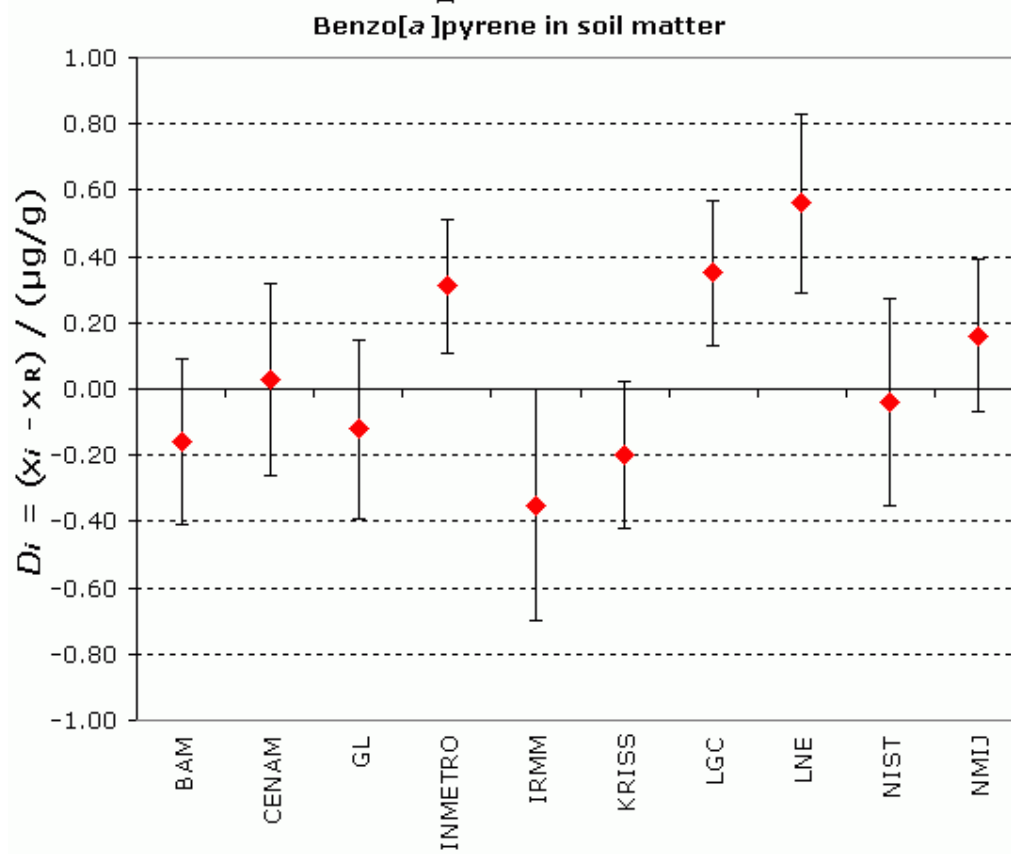
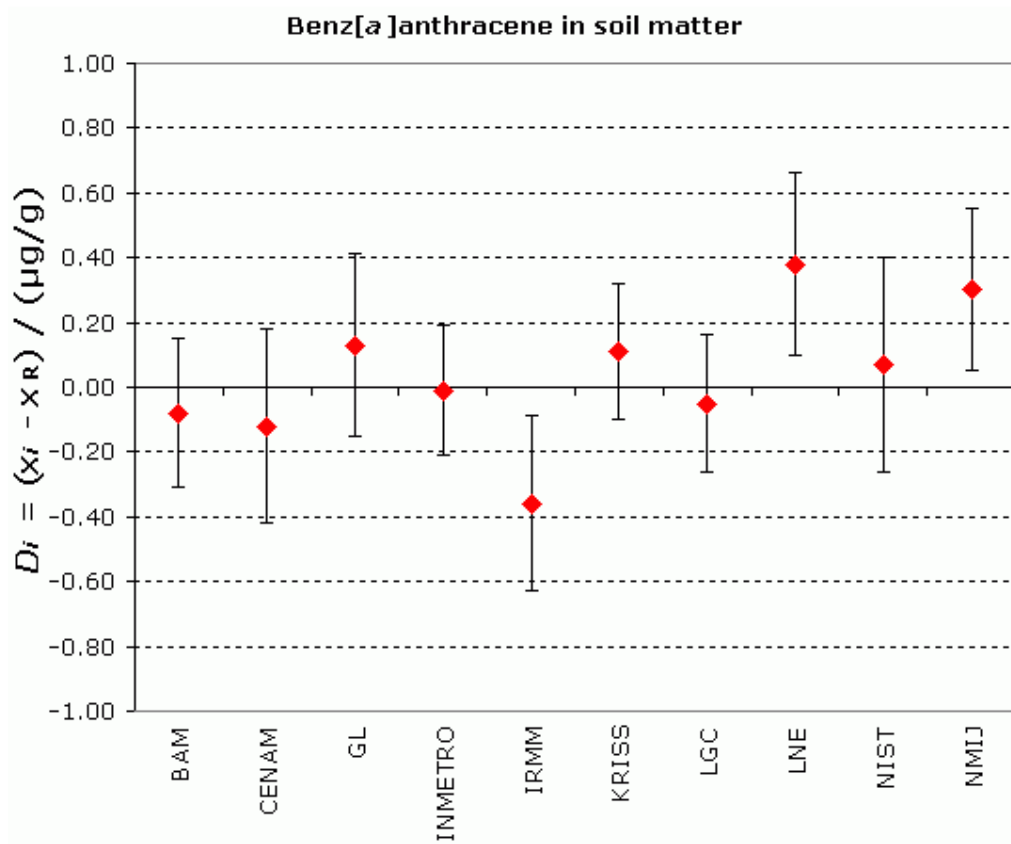
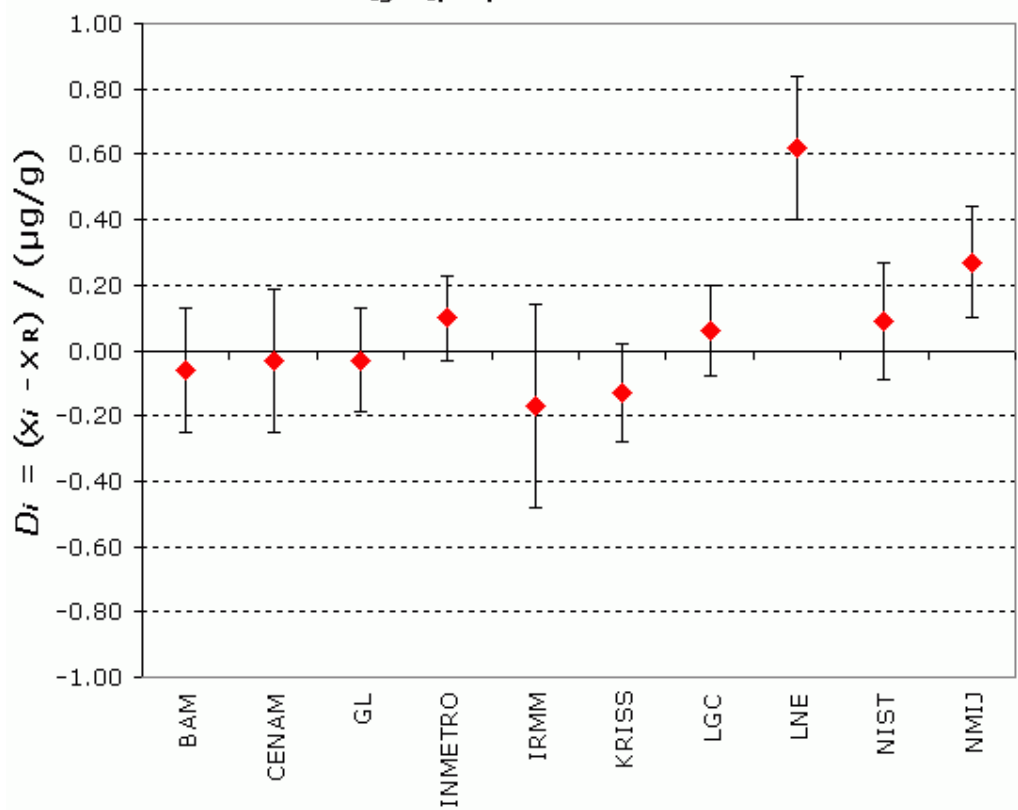


MEASURAND : Mass fraction of PAHs in soil matter  
Degrees of equivalence, offset  $D_i$  and expanded uncertainty at a 95 % level of confidence  $U_i$ ,  
expressed in  $\mu\text{g/g}$

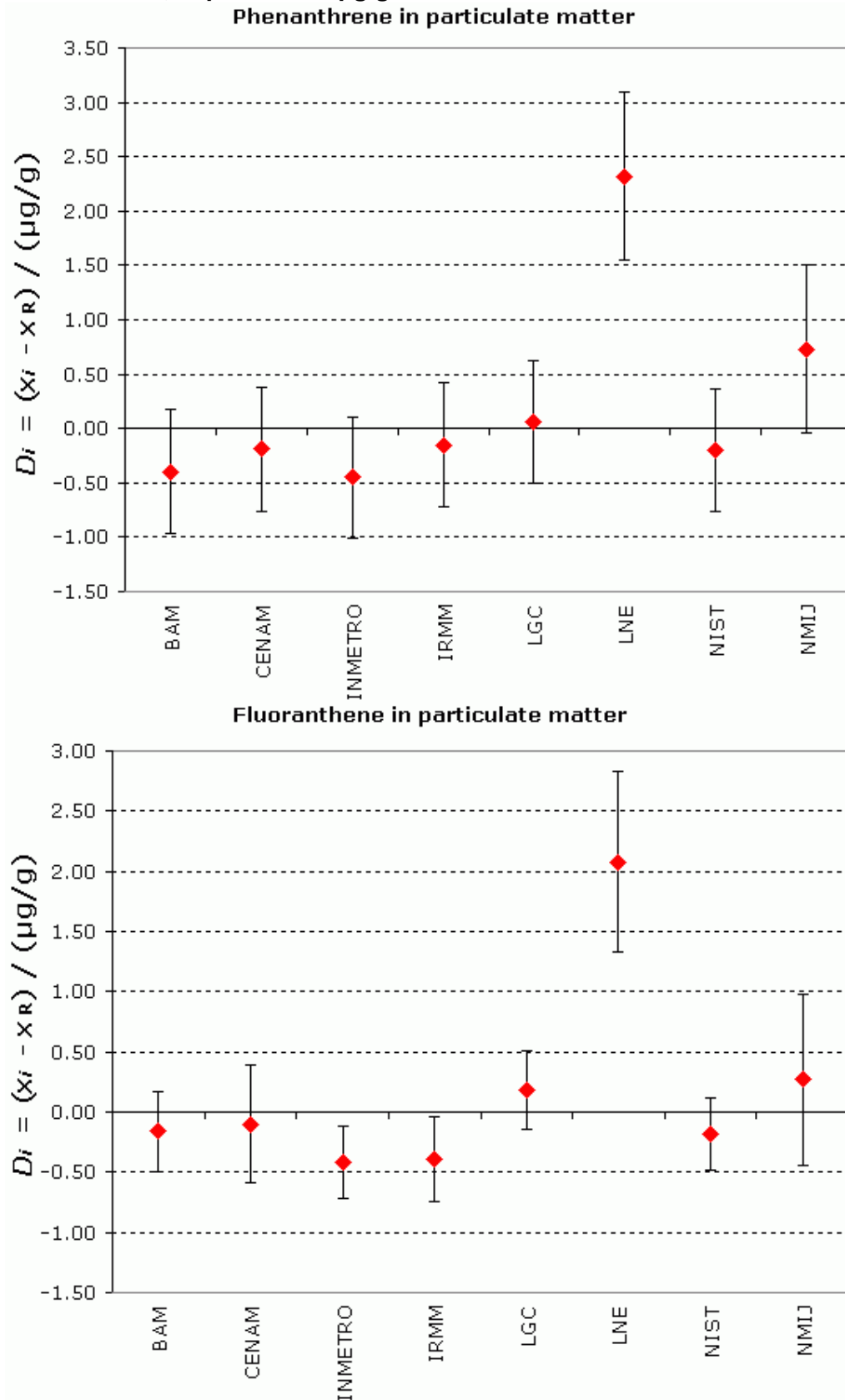


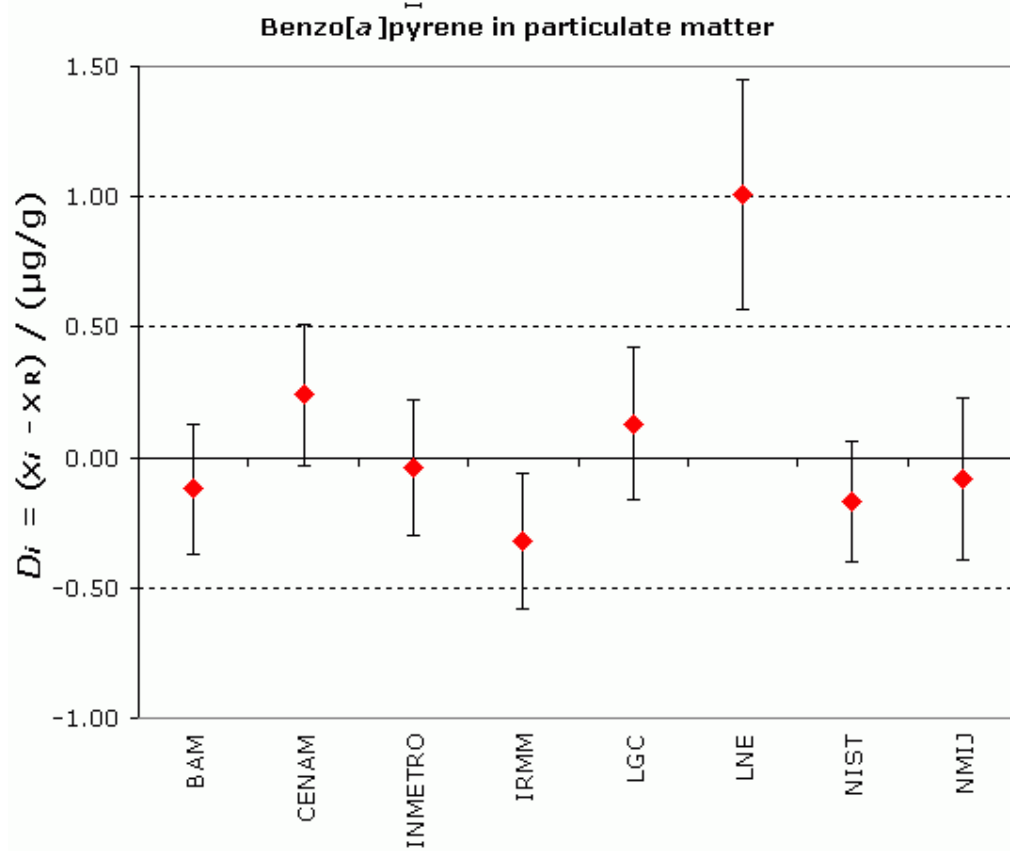
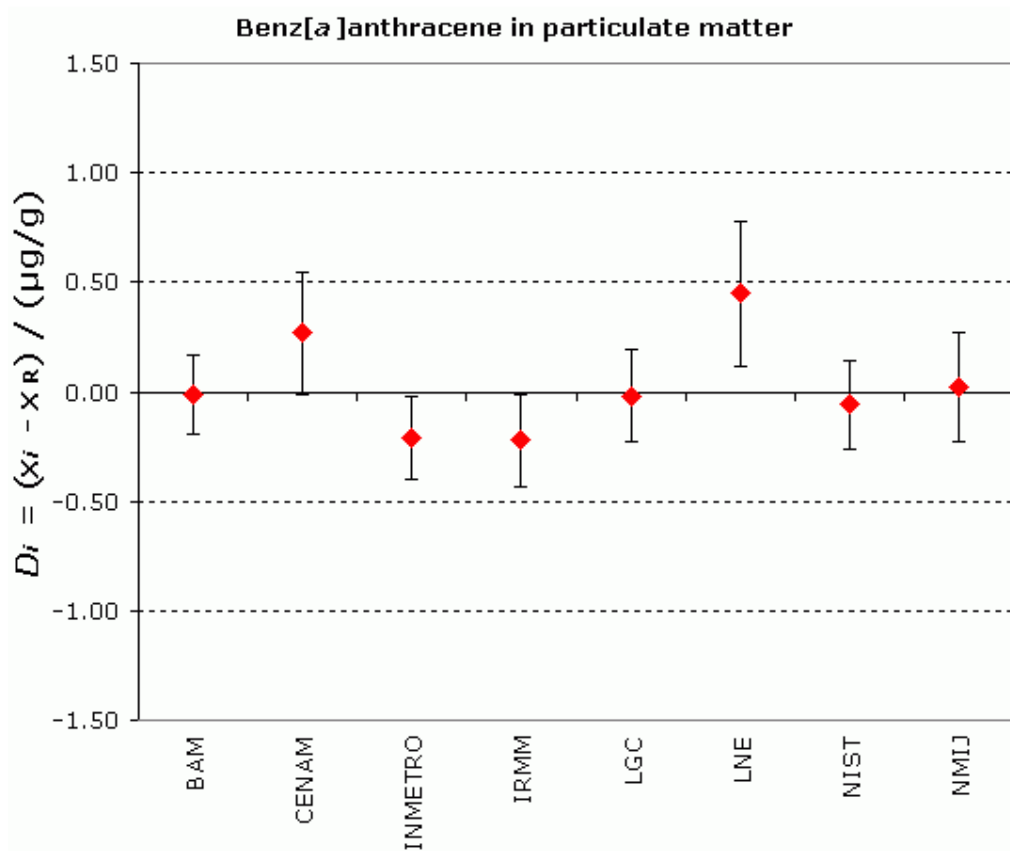


### Benzo[ghi]perylene in soil matter



**MEASURAND : Mass fraction of PAHs in particulate matter**  
**Degrees of equivalence, offset  $D_i$  and expanded uncertainty at a 95 % level of confidence  $U_i$ , expressed in  $\mu\text{g/g}$**





### Benzo[ghi]perylene in particulate matter

