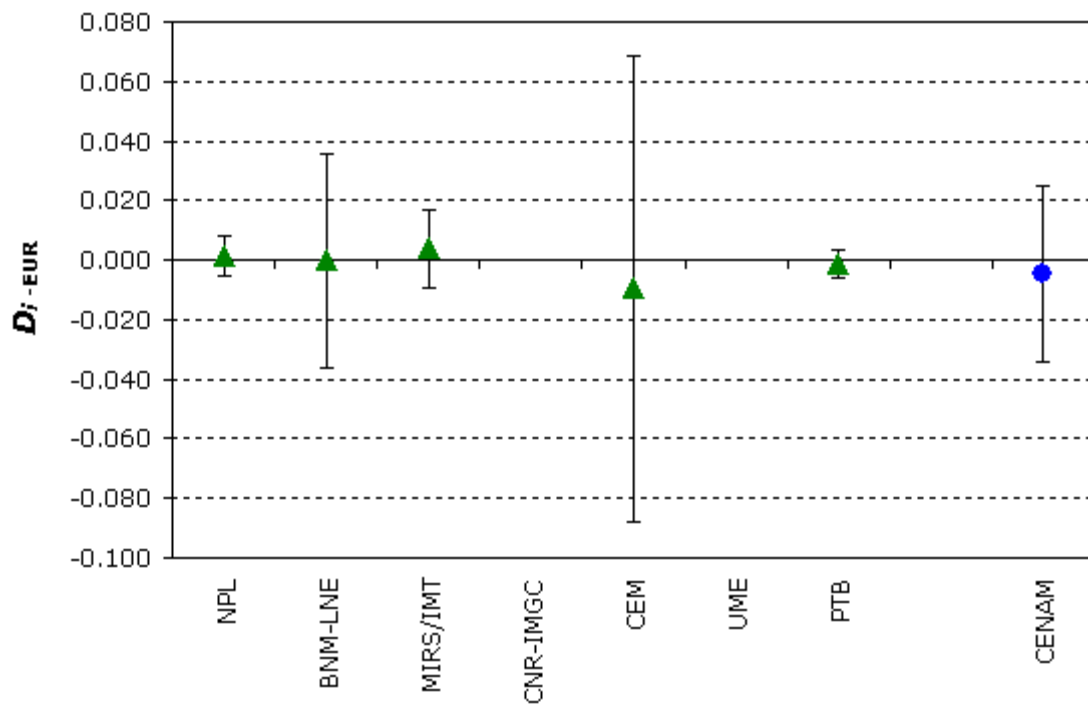
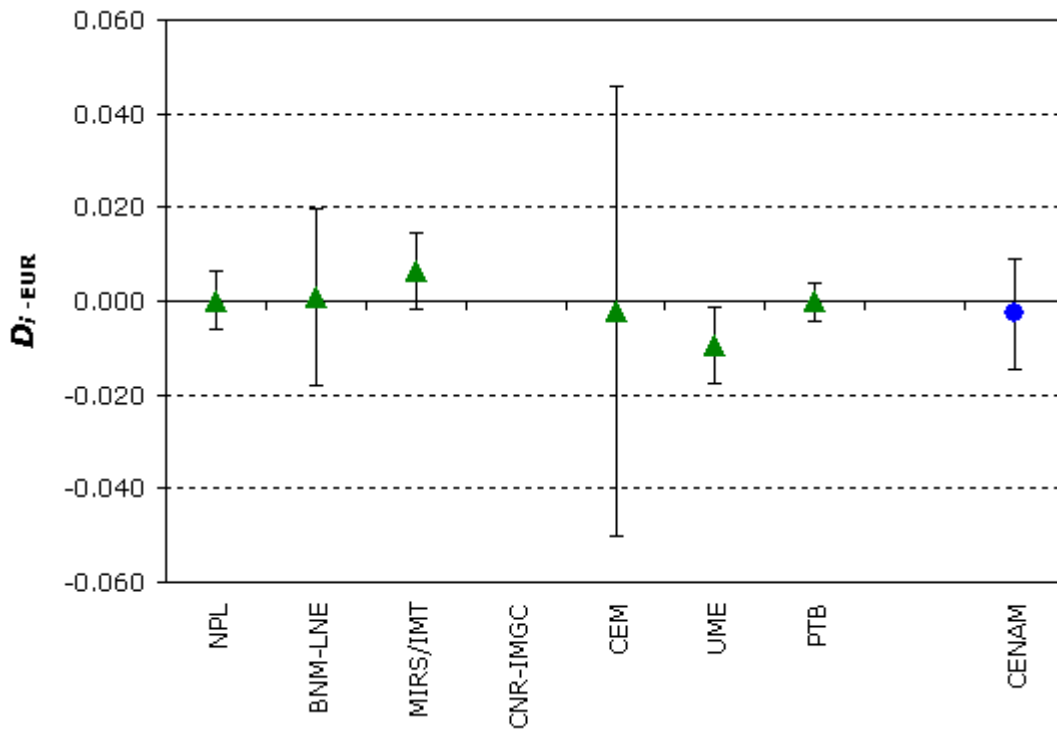


**EUROMET.M.P-K1.b and SIM.EUROMET.M.P-BK3****MEASURAND : Pressure****NOMINAL VALUE : 0.3 mPa****Degrees of equivalence relative to the EUROMET reference value,  $D_{i-EUR}$  and expanded uncertainty  $U_{i-EUR}$  ( $k = 2$ ), expressed in relative terms****Blue circle** : laboratory participant in SIM-EUROMET.M.P-BK3 only**EUROMET.M.P-K1.b and SIM.EUROMET.M.P-BK3****MEASURAND : Pressure****NOMINAL VALUE : 0.9 mPa****Degrees of equivalence relative to the EUROMET reference value,  $D_{i-EUR}$  and expanded uncertainty  $U_{i-EUR}$  ( $k = 2$ ), expressed in relative terms**

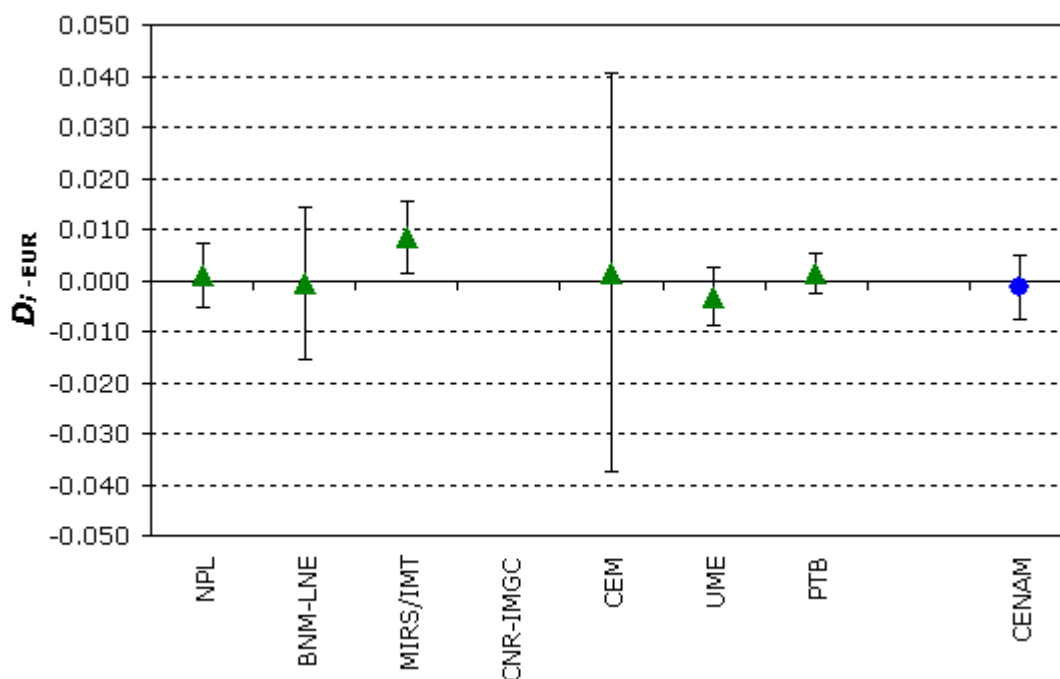


**Blue circle** : laboratory participant in SIM-EUROMET.M.P-BK3 only

### EUROMET.M.P-K1.b and SIM.EUROMET.M.P-BK3

MEASURAND : Pressure  
 NOMINAL VALUE : 3 mPa

Degrees of equivalence relative to the EUROMET reference value,  $D_{i-EUR}$  and expanded uncertainty  $U_{i-EUR}$  ( $k = 2$ ), expressed in relative terms

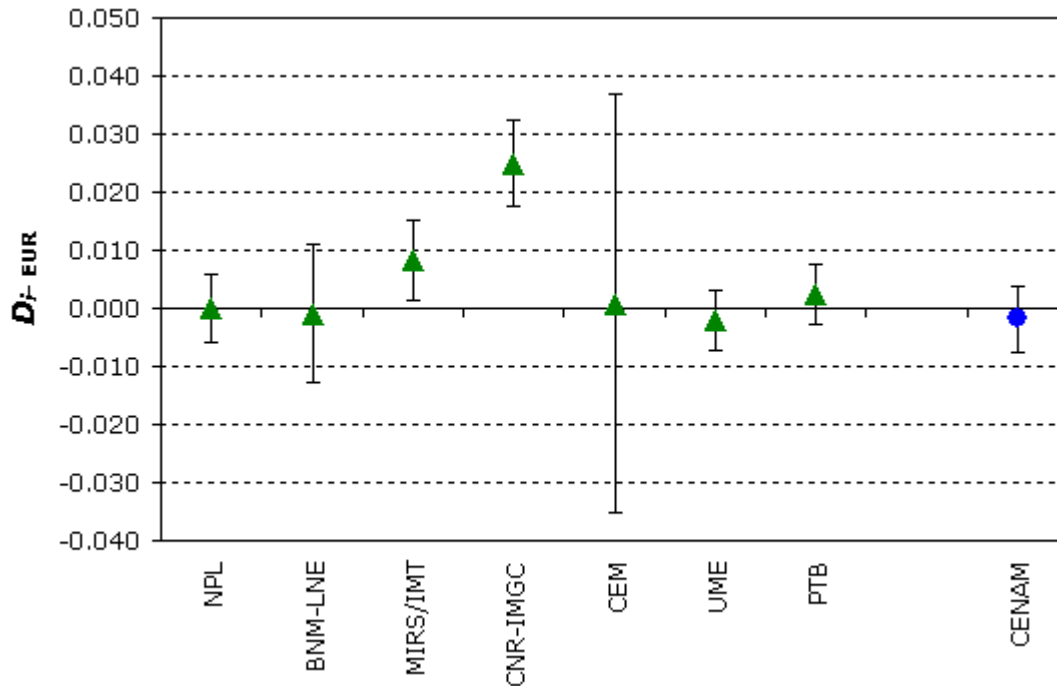


**Blue circle** : laboratory participant in SIM-EUROMET.M.P-BK3 only

### EUROMET.M.P-K1.b and SIM.EUROMET.M.P-BK3

**MEASURAND** : Pressure  
**NOMINAL VALUE** : 9 mPa

Degrees of equivalence relative to the EUROMET reference value,  $D_{i-EUR}$  and expanded uncertainty  $U_{i-EUR}$  ( $k = 2$ ), expressed in relative terms

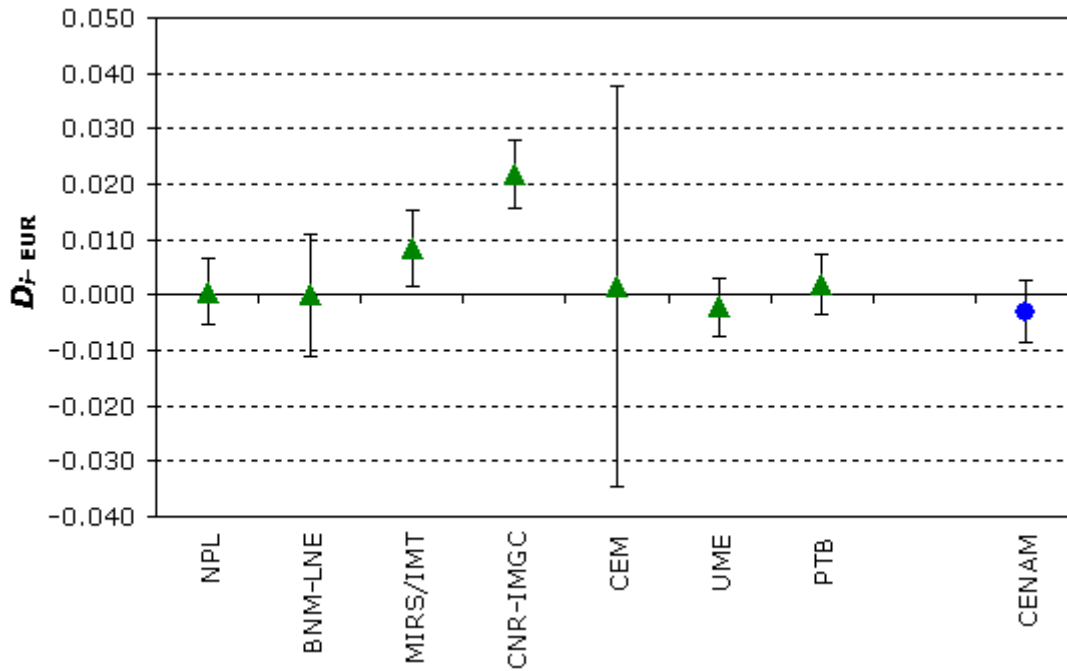


**Blue circle** : laboratory participant in SIM-EUROMET.M.P-BK3 only

### EUROMET.M.P-K1.b and SIM.EUROMET.M.P-BK3

**MEASURAND** : Pressure  
**NOMINAL VALUE** : 30 mPa

Degrees of equivalence relative to the EUROMET reference value,  $D_{i-EUR}$  and expanded uncertainty  $U_{i-EUR}$  ( $k = 2$ ), expressed in relative terms

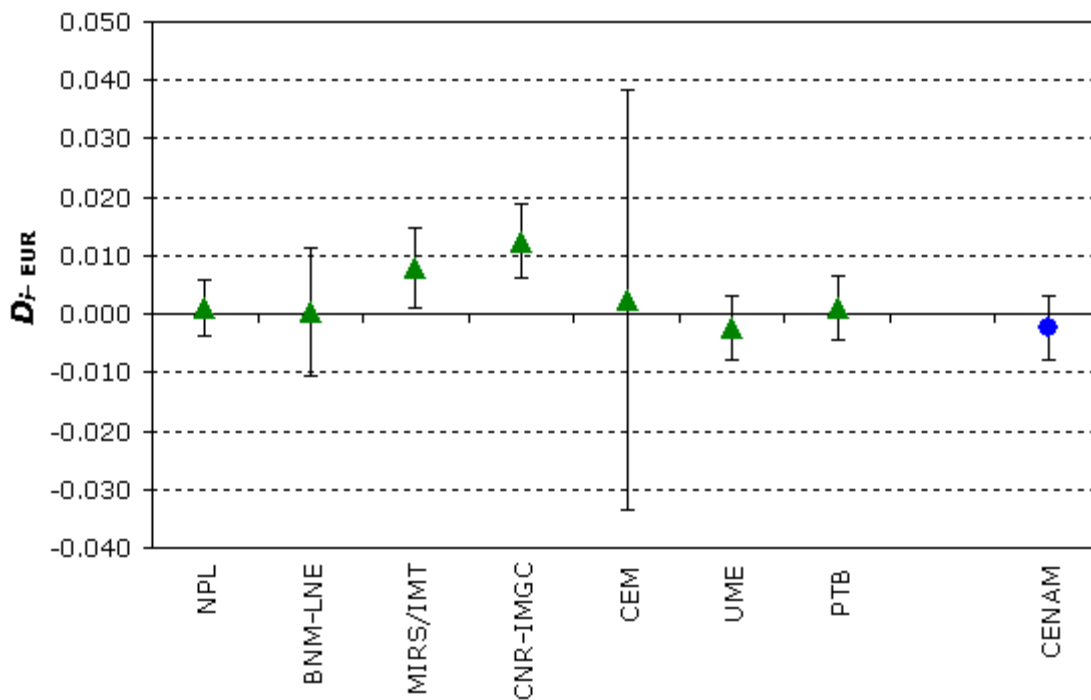


**Blue circle** : laboratory participant in SIM-EUROMET.M.P-BK3 only

### EUROMET.M.P-K1.b and SIM.EUROMET.M.P-BK3

**MEASURAND** : Pressure  
**NOMINAL VALUE** : 90 mPa

Degrees of equivalence relative to the EUROMET reference value,  $D_{i-EUR}$  and expanded uncertainty  $U_{i-EUR}$  ( $k = 2$ ), expressed in relative terms

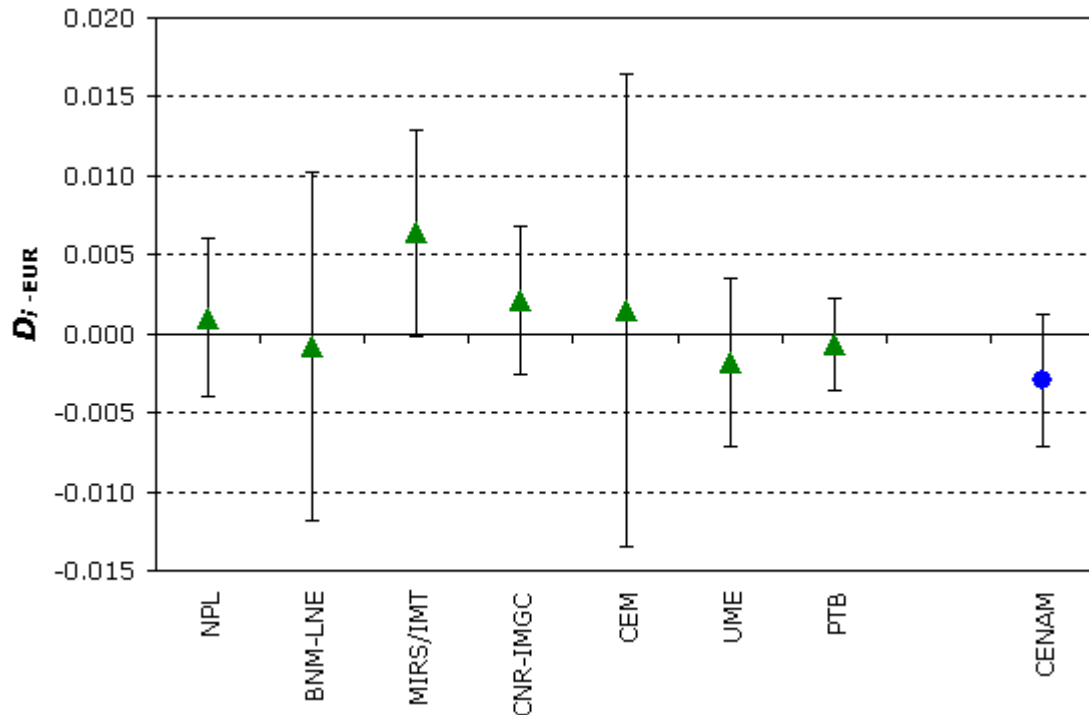


**Blue circle** : laboratory participant in SIM-EUROMET.M.P-BK3 only

### EUROMET.M.P-K1.b and SIM.EUROMET.M.P-BK3

MEASURAND : Pressure  
NOMINAL VALUE : 0.3 Pa

Degrees of equivalence relative to the EUROMET reference value,  $D_{i-EUR}$  and expanded uncertainty  $U_{i-EUR}$  ( $k = 2$ ), expressed in relative terms

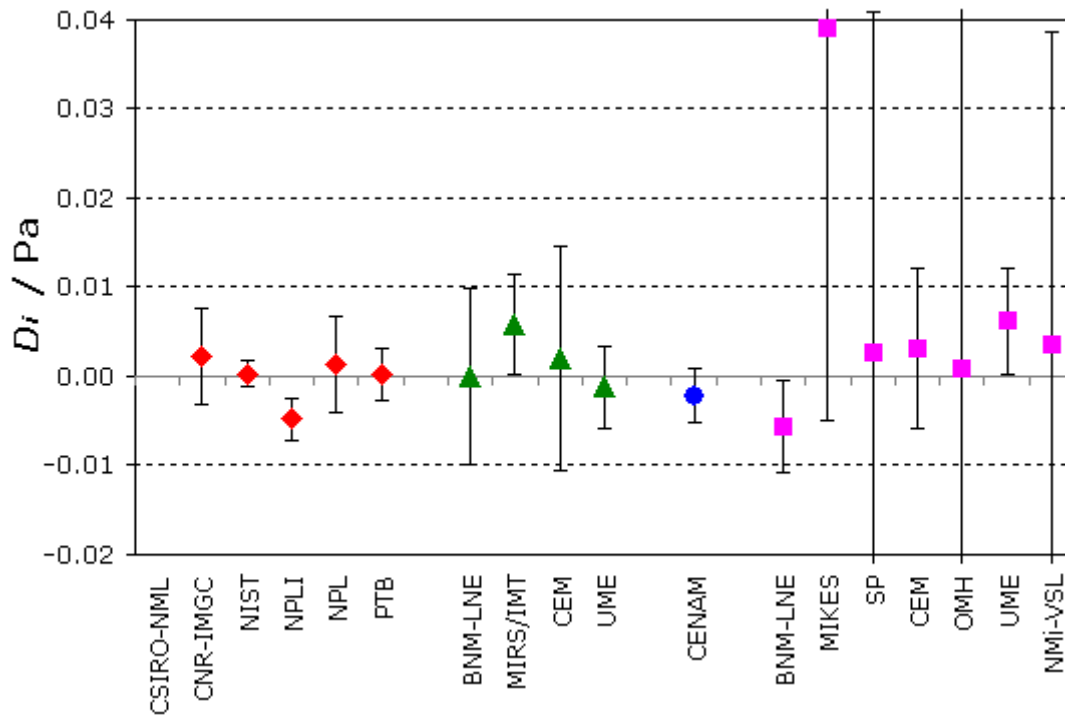


**Blue circle** : laboratory participant in SIM-EUROMET.M.P-BK3 only

### CCM.P-K4, EUROMET.M.P-K1.a, EUROMET.M.P-K1.b and SIM-EUROMET.M.P-BK3 for nominal pressures close to 1 Pa

MEASURAND : Pressure

Degrees of equivalence  $D_i$  and expanded uncertainty  $U_i$  (95% level of confidence) expressed in Pa



**Red diamonds** : participants in CCM.P-K4

**Green triangles** : participants in EUROMET.M.P-K1.b and not in CCM.P-K4

**Blue circle** : participant in SIM-EUROMET.M.P-BK3 and not in CCM.P-K4

**Pink squares** : participants in EUROMET.M.P-K1.a and not in CCM.P-K4

Note: Information not apparent on the graph

-  $D_{\text{CSIRO-NML}} = 0.21$  Pa and  $U_{\text{CSIRO-NML}} = 0.05$  Pa,

-  $U_{\text{OMH}} = 0.082$  Pa